

# Biology Grade 9+

## Worksheet 1

NAME: .....

CLASS: .....

### Section A

#### Question 1: Multiple choice questions [10 marks]

Circle the correct answer.

1. Which of the following is **not** an importance of biodiversity?

A the provision of food



B the provision of medicines



C For recreation and ecotourism



D the provision of plastic material



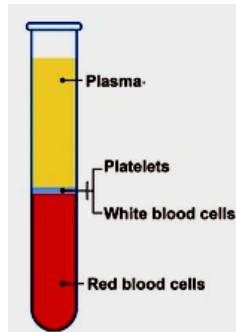
2. Which one of the following is a communicable disease?

- A Stroke
- B Syphilis
- C Diabetes
- D Heart attack

3. There is a large central nucleus in mature .....

- A Red blood cell
- B White blood cell
- C Platelets
- D Plasma

4. Blood contains approximately.....of plasma.



- A 10 %
- B 20%
- C 55 %
- D 5%

5. .... reproduces by asexual reproduction

- A. dog
- B potato
- C bird
- D Cat

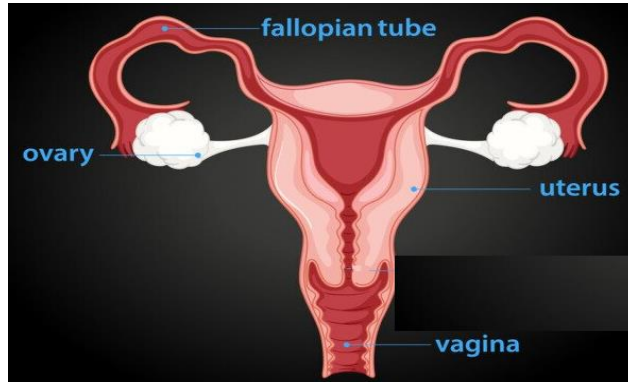


6. In asexual reproduction, offsprings produced are \_\_\_\_\_ to the parents.

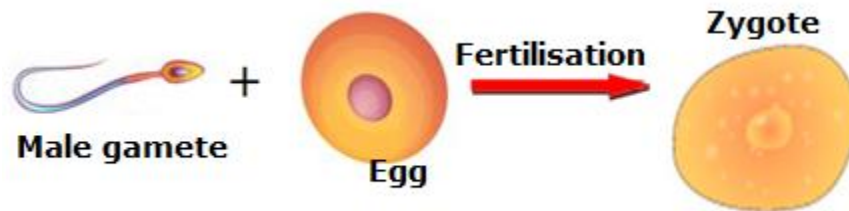
- A slightly different
- B not identical
- C completely different
- D identical

7. The diagram below shows the surface view of the female reproductive system. The female gamete is produced in the.....

- A fallopian tube      B uterus      C vagina      D ovary



8. The male gamete which fuses with the egg during fertilization is known as the .....



- A sperm      B ovum      C embryo      D foetus

9. Which of the following actions would help control the spread of sexually transmitted diseases?

- A Eating lots of fruits and vegetables.
- B Eating less salt and fried foods
- C Washing hands regularly.
- D Using protection during sexual contact.

10. Blood leaves the heart under high pressure through the .....

- A. arteries      B. veins      C capillaries      D valves

**Question 2 [6 marks]**

**State whether the following is true or false.**

- (i) Use of condoms is a protective measure against the transmission of HIV/AIDS. ....
- (ii) HIV/AIDS is caused by a virus. ....
- (iii) Veins contain pulse. ....
- (iv) Pulse can be felt at the wrist .....  
.....
- (v) Biodiversity maintains the balance of the ecosystem. ....
- (iv) Quadrats can be used to estimate number of slow-moving  
organisms in a habitat. ....

**Question 3 [5 marks]**

Study the diagrams below which show some of the main causes of cardiovascular diseases. **Match each cause with its appropriate diagram [5 marks]**



**SMOKING  
CIGARETTE**

**OBESITY**

**LACK OF  
PHYSICAL  
EXERCISE**

**DIET WITH HIGH LEVEL  
OF FATS AND SALTS**

**STRESS**

**Question 4 [7 marks]**

**Fill in the blank spaces using the correct words given below:**

*Yeast, asexual, sexual, ovum, gametes, oviduct, non-identical.*

- (a) .....reproduction involves two parents whereas.....reproduction involves one parent only.
- (b) ..... reproduces asexually.
- (b) Sexual reproduction involves fusion of .....
- (c) The offsprings produced in sexual reproduction are.....to the parents.
- (e) The female gamete is the .....
- (f) The male and female gametes fuse in the ..... by the process of fertilization.

**Question 5 [10 marks]**

Figure 5.1 shows the process of photosynthesis by which a plant manufactures its food.



Figure 5.1: A plant manufacturing its food

(a) Name the four materials necessary for a plant to manufacture its food?

1. ....
2. ....
3. ....
4. ....(4)

(b) (i) Suggest from where the plant gets energy to make food?

.....(1)

(ii) Which substance is required to capture energy?

.....(1)

(iii) Which raw material is obtained from the soil?

.....(1)

(iv) In which form is food manufactured?

.....(1)

(c) Name the gas which is

(i) produced during photosynthesis

.....

(ii) used during photosynthesis

.....(2)

**Question 6 [12 marks]**

**Table 6.1 shows HIV /AIDS cases in Mauritius from January 2020 to June 2020.**

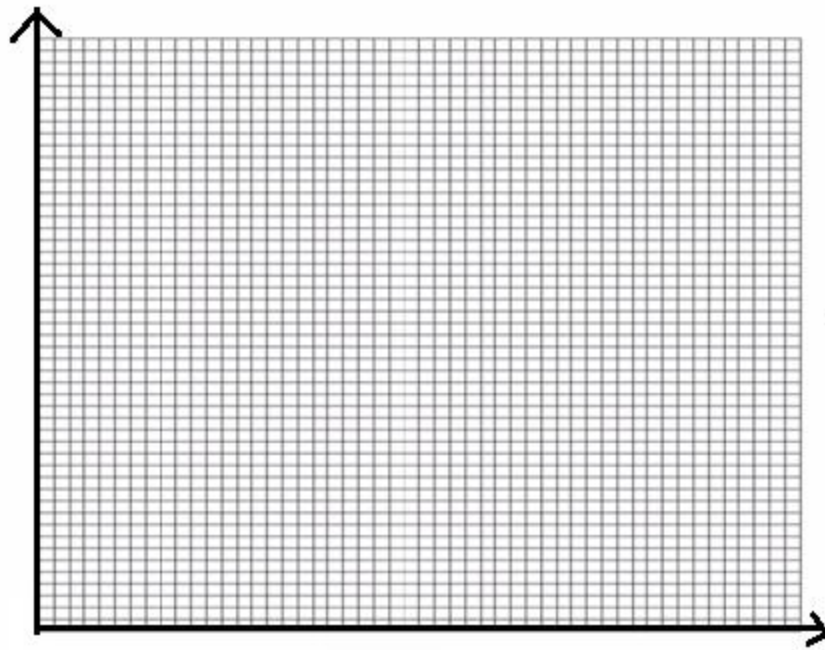
<b>Month</b>	<b>Number of HIV/AIDS CASES</b>		
	<b>Man</b>	<b>Woman</b>	<b>Total number of HIV/AIDS cases</b>
January	14	11	14+11= 23
February	26	17	
March	16	6	
April	7	5	
May	13	7	
June	18	10	

Table 6.1 : HIV/AIDS cases in Mauritius from January 2020 to June 2020

(a) Complete Table 6.1 by calculating the total number of HIV/AIDS cases for the months of February to June 2020. (5)



(b) Draw a bar chart showing the total number of HIV/AIDS cases from January 2020 to June 2020. (3)



(d) State the month which recorded the highest number of HIV/AIDS in both man and woman.

.....(1)

(e) Use the bar chart to explain the trend of total number of HIV/AIDS cases from January 2020 to June 2020

.....(2)

(f) Suggest what could be done by the government to prevent the spread of HIV/AIDS?

.....(1)